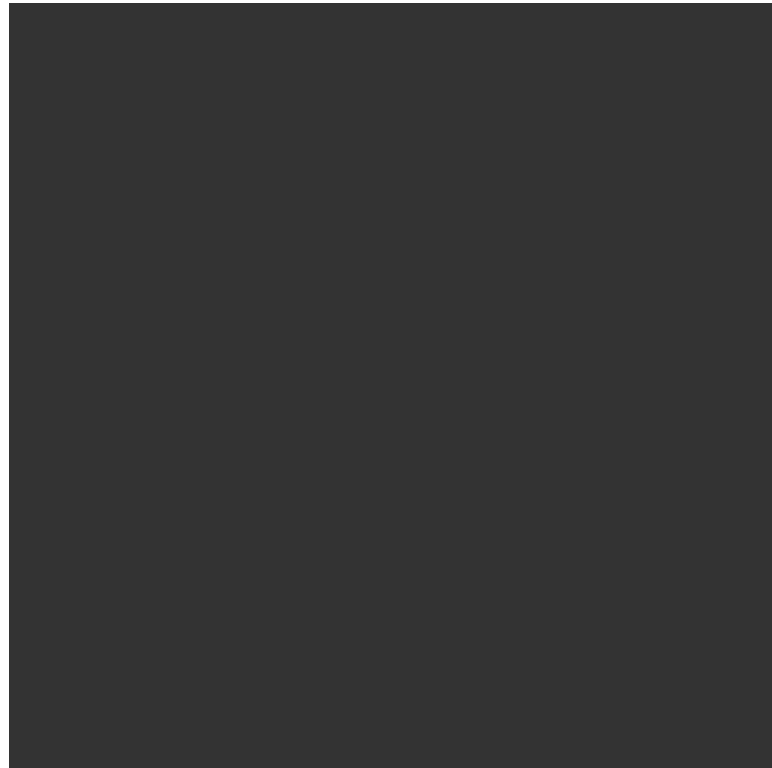




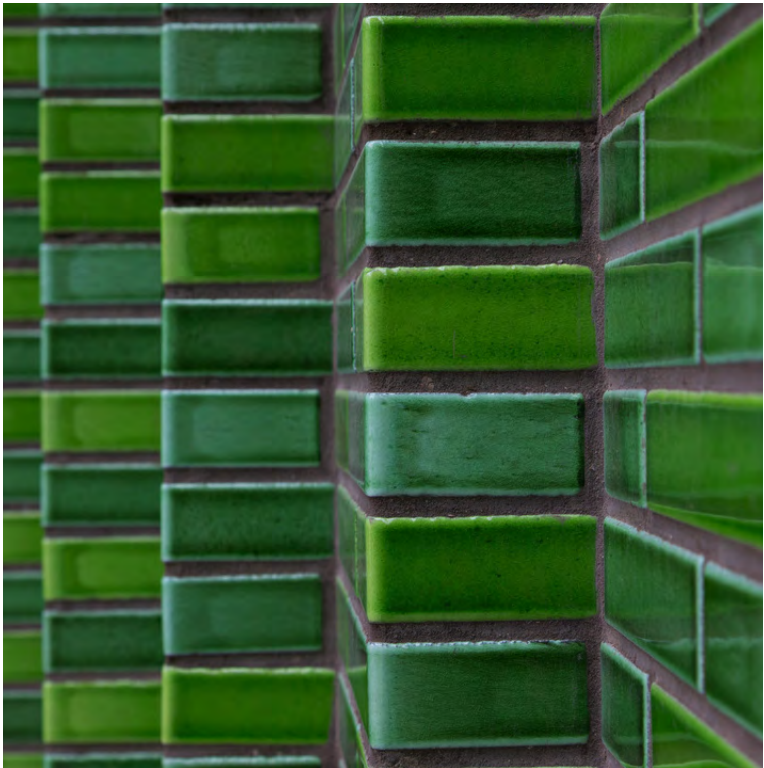
BWK1



PCF1, CLD1, CLD2, PF1



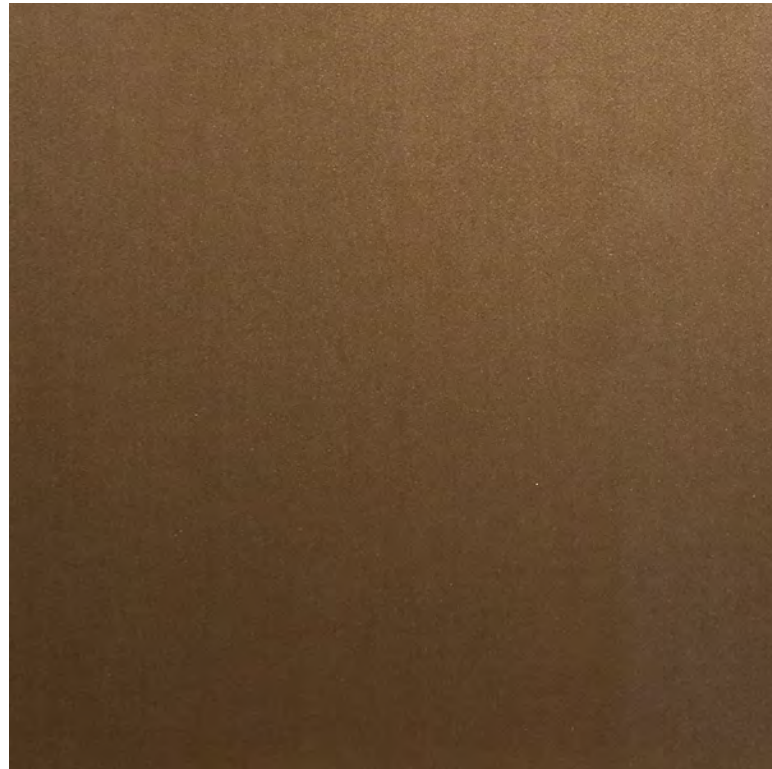
COF2, AWN1



BWK3



CPC1



PCF2, CLD3, PF2



COF3, AWN2



SCN1



LA1



PCF3, CLD4, PF3



AWN4, COF1, CPC2



GC7



ART #1,2,3 etc) (indicative)

Source 'Banksia Marginata' by Gail Kellet

Materials & Finishes Legend

(Refer to Sample Board and Drawings for Further Information)

- Artwork to Awning soffit. Artist and artwork subject to future selection.
- Off form concrete with board profile texture. Colour and finish to match PCF1.
- Off form concrete with board profile texture. Colour and finish to match COF2.
- Semi Frameless Glass, clear. Framing system and fascia, aluminum. Colour and finish to match PCF1.
- Off form concrete awning. Colour and finish to match COF1. Integrated Planter LA1.
- Pergola, steel structure. PCF2, with shading system and semi frameless clear glass. Equal to Bowwood 'DBE4028' Colour to match 'Spotted Gum' in appearance.
- 'Frameless' clear glass balustrade system, fixed to inside face of spandrel. Top rail framing system only. aluminum, powder coat finish. Colour to match PCF2.
- Semi frameless full height clear glass balustrade system. Framing system aluminum, powder coat finish. Colour to match PCF2.
- Balustrade system with aluminum external frame with Glass block, paneling. Framing system and top rail aluminum, powder coat finish. Colour to match PCF2.
- Balustrade system equal to 'Aneeta stainless window system'. Framing system aluminum, powder coat finish. Colour to match PCF2.
- Dry pressed brickwork, white colour range. Brickwork pattern stretcher bond. Colour and finish equal to Boral Brick 'Chillingham White' 230 x 76mm 'standard' format. Mortar colour, 'white'.
- Decorative brickwork, finish equal to Pyralis 'Emerald Green' 230 x 76mm 'standard' format. Mortar colour, 'charcoal'.
- Metal cladding system, to street level entries. Concealed Joints. Colour and finish equal to PCF1.
- Metal cladding system, express jointed, vertical format. Pre-finished coating system. Where required for building services, matching louvre system integrated into overall cladding system. Colour and finish to match PCF1.
- Metal cladding system, express jointed, vertical format. Pre-finished coating system. Where required for building services, matching louvre system integrated into overall cladding system. Colour and finish to match PCF2.
- Balustrade system with aluminum external frame with Glass block, paneling. Framing system and top rail aluminum, powder coat finish. Colour to match PCF2.

- Vertical battens cladding system 25mm wide x 50mm deep format with 50mm spacing. Subframe concealed behind. Equal to Bowwood 'DBE4028' Colour to match 'Spotted Gum' in appearance.
- Off form concrete. Natural, smooth finish. Colour natural 'light and briar' concrete mix. Penetrating clear matte sealer over.
- Decorative off form concrete. Rough sawn board finish, 150mm profile. Colour natural concrete mix with translucent pigment mineral stain (50% concentrate), colour black, over.
- Decorative profile / stepped wall element, concrete off form finish. Profile depth varies. Natural, smooth board finish. Colour natural 'light and briar' concrete mix. Penetrating clear matte sealer over.
- Smooth finish concrete (recessed spandrel). Stepped profile element with integrated planter. Natural, smooth finish. Colour natural 'light and briar' concrete mix. Penetrating clear matte sealer over.
- Street Level Foyers: Aluminum framed facade glazing system, with integrated automatic sliding doors or pivot door to lobby entries. Glass type, GC2. Framing system, aluminum, powder coat finish. Framing colour to match PCF1.
- Performance of overall system to meet ESD and facade engineer's requirements. Reflectivity to be less than 20%.

- Street Level Retail: Front glazed facade system, decorative steel frame with projecting bay windows. Fixed Glazing with operable elements equal to 'Aneeta stainless window system' and semi frameless entry glazed door. Glass type GC3.
- Aluminum frame to be powder coat finish, colour equal to PCF1.
- Performance of overall system to meet ESD and facade engineer's requirements. Reflectivity to be less than 20%.
- Glazed Brick (BWK3) to storefront base. Where required for building services, matching louvre system integrated into overall cladding system. Colour and finish to match PCF1.
- Commercial / Retail Podium: Front glazed facade system with decorative projecting vertical steel mullion. Glass type GC4 and/or GC5. Shadow Box detail to slab edge, to conceal wall elements and / or ceiling space behind where design intent for glazing is to be continuous.
- Aluminum cover plate to other elements. PCF. Colour of backdrop to match glazing. Aluminum frame to be powder coat finish, colour equal to PCF1.
- Where required for building services, matching louvre system integrated into overall cladding system.
- Performance of overall system to meet ESD and facade engineer's requirements. Reflectivity to be less than 20%.
- Commercial / Retail Podium: Cladded facade system with decorative projecting vertical steel mullion. Cladding type CLD1.
- Aluminum cover plate to other elements. PCF. Colour of backdrop to match glazing.
- Aluminum frame to be powder coat finish, colour equal to PCF1.
- Where required for building services, matching louvre system integrated into overall cladding system.
- Performance of overall system to meet ESD and facade engineer's requirements. Reflectivity to be less than 20%.
- Street Level Glazing: Aluminum framed facade glazing system, with integrated automatic sliding doors or pivot door to lobby entries. Glass type, GC2. Framing system, aluminum, powder coat finish. Framing colour to match PCF1.
- Performance of overall system to meet ESD and facade engineer's requirements. Reflectivity to be less than 20%.

- Commercial / Retail Podium: Front glazed facade system with projecting bay windows. Integral glazed solid hatch, awning system and Aneeta Stainless window systems (BAL2). Glass type GC1 and/or GC5. Aluminum cover plate to other elements. PCF. Aluminum frame to be powder coat finish, colour equal to PCF2.
- CLD3 panel integrated with window system.
- Performance of overall system to meet ESD and facade engineer's requirements. Reflectivity to be less than 20%.
- Residential levels: Front glazed facade system with projecting bay windows. Integral glazed solid hatch, awning system. Glass type GC1 and/or GC7. Aluminum cover plate to other elements. PCF3.
- CLD3 panel integrated with window system.
- Performance of overall system to meet ESD and facade engineer's requirements. Reflectivity to be less than 20%.
- Residential levels: Front glazed facade system with projecting bay windows. Integral glazed solid hatch, awning system. Glass type GC1 and/or GC7. Aluminum cover plate to other elements. PCF3.
- CLD3 panel integrated with window system.
- Performance of overall system to meet ESD and facade engineer's requirements. Reflectivity to be less than 20%.
- Glass, clear Residential. Glazing integral to facade system i.e. FT1.2, etc.
- Glass, clear Foyer. Glazing integral to facade system i.e. FT1.2, etc.
- Glass, clear Retail. Glazing integral to facade system i.e. FT1.2, etc.

- Glass, clear Commercial. Glazing integral to facade system i.e. FT1.2, etc.
- Glass, obscure Residential. Privacy Glazing integral to facade system i.e. FT1.2, etc.
- Glass, obscure Commercial / Retail. Privacy Glazing integral to facade system i.e. FT1.2, etc.
- Glass Block. Privacy Glazing integral to facade system i.e. FT1.2, etc.
- Decorative handrail to street level interface. 32mm diam. Steel, finish to match PCF2.
- Decorative handrail to common residential levels. 32mm diam. Steel, finish to match PCF2.
- CLD3 panel integrated with window system.
- Performance of overall system to meet ESD and facade engineer's requirements. Reflectivity to be less than 20%.
- Landscaped planting area. Refer to Landscape Architects documentation for details.
- Landscaped vertical planting area. Refer to Landscape Architects documentation for details.
- Fixed horizontal mechanical louvre system. 100mm profile. Aluminum, powder coat finish. Colour and finish to match PCF1. PCF2 or where integral to a cladding system installation to match the cladding system colour and finish.
- Powdercoat Finish. Colour and finish equal to Dulux 'Medium Bronze Flat' or equal.
- Powdercoat Finish. Colour and finish equal to Dulux 'Basalt Flat' or equal.
- Glass, clear Commercial. Glazing integral to facade system i.e. FT1.2, etc.
- Glass, obscure Residential. Privacy Glazing integral to facade system i.e. FT1.2, etc.
- Glass, obscure Commercial / Retail. Privacy Glazing integral to facade system i.e. FT1.2, etc.
- Glass Block. Privacy Glazing integral to facade system i.e. FT1.2, etc.
- Decorative handrail to street level interface. 32mm diam. Steel, finish to match PCF2.
- Decorative handrail to common residential levels. 32mm diam. Steel, finish to match PCF2.
- CLD3 panel integrated with window system.
- Performance of overall system to meet ESD and facade engineer's requirements. Reflectivity to be less than 20%.
- Landscaped planting area. Refer to Landscape Architects documentation for details.
- Landscaped vertical planting area. Refer to Landscape Architects documentation for details.
- Fixed horizontal mechanical louvre system. 100mm profile. Aluminum, powder coat finish. Colour and finish to match PCF1. PCF2 or where integral to a cladding system installation to match the cladding system colour and finish.
- Powdercoat Finish. Colour and finish equal to Dulux 'Medium Bronze Flat' or equal.
- Powdercoat Finish. Colour and finish equal to Dulux 'Basalt Flat' or equal.

- Powdercoat Finish. Colour and finish equal to Dulux 'Basalt Flat' or equal.
- Paint Finish. Colour to match PCF1.
- Paint Finish. Colour to match PCF2.
- Paint Finish. Colour to match PCF3.
- Paint Finish. Colour equal to Dulux 'Vivid White'.
- Paving Ground Level public domain and foyer areas. Refer to landscape Architect's documentation.
- Paving Ground Level driveway and service access areas. Refer to landscape Architect's documentation.
- Paving Roof terrace. Refer to landscape Architect's documentation.
- Privacy screening. Vertical battens 25mm wide x 50mm deep format with 50mm spacing. Subframe concealed behind screen. Equal to Bowwood 'DBE4028' Colour to match 'Spotted Gum' in appearance.
- Fixed Glass perimeter screen with steel structural support. Clear glass (GC1). Structural elements finished in PCF1.
- Fixed Glass perimeter screen with steel structural support. Obscured glass (GC5). Structural elements finished in PCF1.
- Aluminum privacy screening. Vertical battens 25mm dia 50mm spacing. Subframe concealed behind screen. Colour to match PCF2.
- Building identification signage zone for surface fixed signage.

- Fixed Glass perimeter screen with steel structural support. Clear glass (GC1). Structural elements finished in PCF1.
- Fixed Glass perimeter screen with steel structural support. Obscured glass (GC5). Structural elements finished in PCF1.
- Aluminum privacy screening. Vertical battens 25mm dia 50mm spacing. Subframe concealed behind screen. Colour to match PCF2.
- Building identification signage zone for surface fixed signage.
- Solid ventilation hatch integrated with facade system. Cladding equal to CLD3. Colour and finish to match.
- Refer to Landscape documentation for public domain and landscape areas for further information regarding materials and finishes selection.

NOTES
THIS DRAWING IS COPYRIGHT © OF TURNER. NO REPRODUCTION WITHOUT PERMISSION. UNLESS NOTED OTHERWISE THIS DRAWING IS NOT FOR CONSTRUCTION. ALL DIMENSIONS AND LEVELS ARE TO BE CHECKED ON SITE PRIOR TO THE COMMENCEMENT OF WORK. BEFORE TURNER IF ANY DISCREPANCIES FOR CLARIFICATION BEFORE PROCEEDING WITH WORK. DRAWINGS ARE NOT TO BE SCALED. USE ONLY FIGURED DIMENSIONS. REFER TO CONSULTANT DOCUMENTATION FOR FURTHER INFORMATION. DWG, PCF AND BWA FILES ARE LOCKED TO THIS DOCUMENT AND ARE ISSUED FOR INFORMATION ONLY.

CLIENT
LYON GROUP AUSTRALIA
Suite 1002, 153 Walker Street North Sydney
NSW 2060



DLCS Quality Endorsed Company ISO 9001:2015, Registration Number 20478
Notwithstanding And/Or Nicholas Turner 1605, APN 98-264-284-811

Rev Date Approved By Revision Notes
01/01/21 09/09/21 AC

Project Title
Epping Central
59-77 Becroft Road & 72 Rawson Street Epping NSW 2121 Australia

Drawing Title
Materials & Finishes Board
Materials & Finishes

Scale
1:2.09, 1:0.61, 1:1.58, 1:0.46, 1:1.05 @A1, 50:1 @A2
For Information

Project No.
59-77 Becroft Road & 72 Rawson Street Epping NSW 2121 Australia
Dwg No.
DA-890-001

Drawn by
ACKNYOMP
Re:
DA01



TURNER

Level 7 ONE Oxford Street
Darlinghurst NSW 2010
AUSTRALIA
T +61 2 8658 0000
F +61 2 8658 0068
www.turner.co.au